

Beluga Whale (*Delphinapterus leuca*) Cook Inlet subpopulation



Figure 1. Map of Alaska showing the locations of summering concentrations of western Alaska Beluga stocks (stippled), Cook Inlet, and Yakutat Bay.

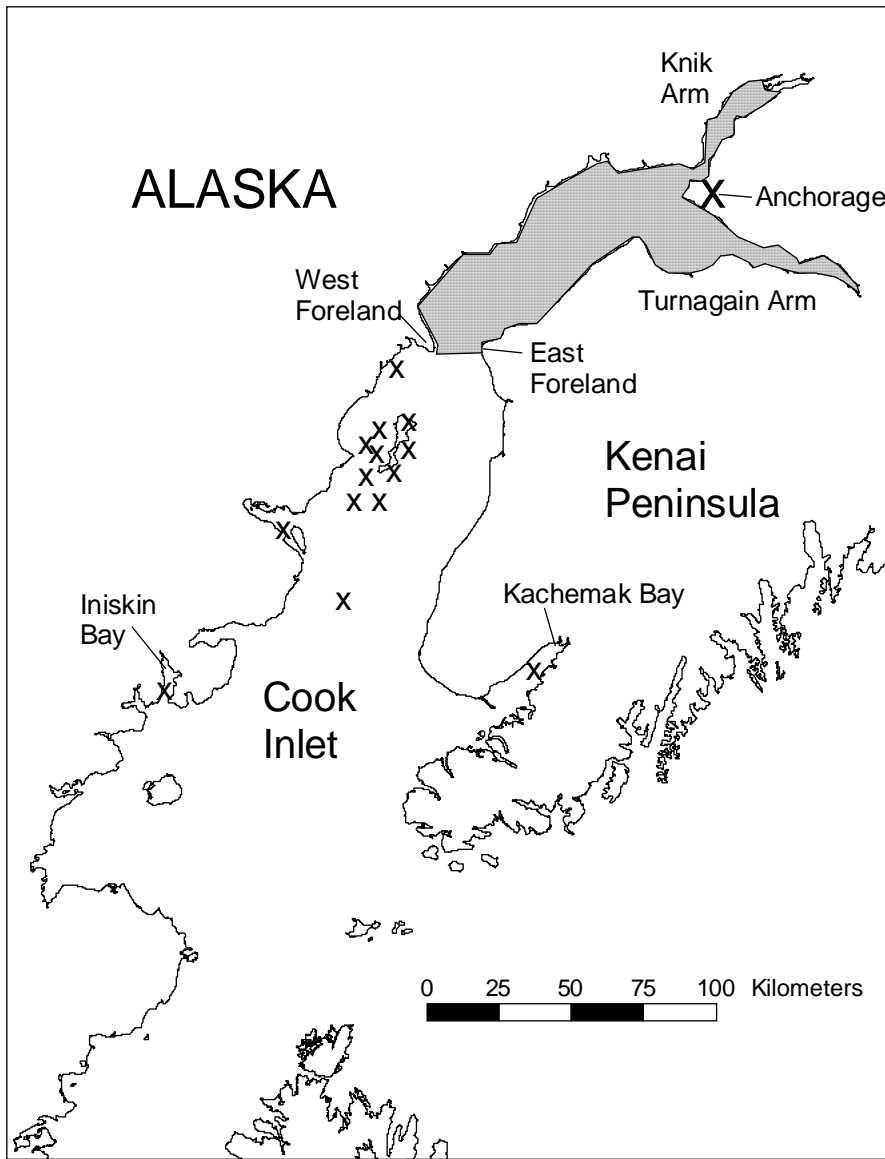


Figure 2. Map showing the main area of occurrence of Cook Inlet belugas (stippled) and other areas where sightings were made during summer and winter aerial surveys, 1993-2000 (dark dots).

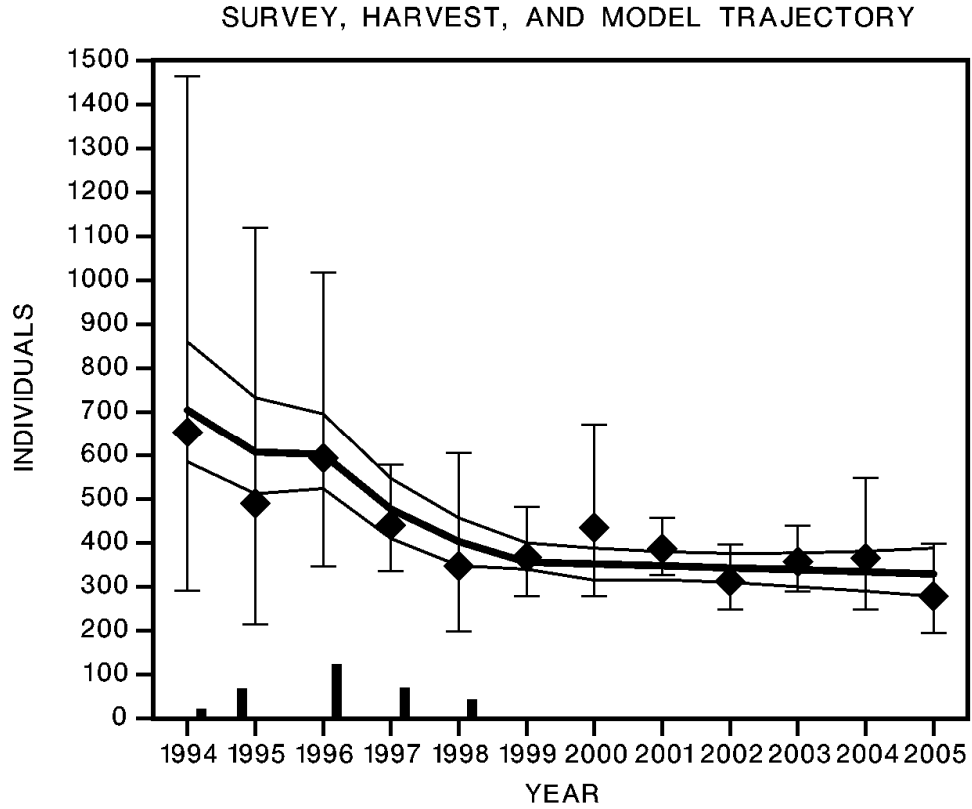


Figure 3. Bayesian inference on the population size of Cook Inlet belugas, 1994–2005. The Bayesian posterior mode, and the posterior 95% interval for the true population size, are shown as the one heavy and the two thin trajectories connecting those quantities for each year. The estimates of harvest landed plus struck and lost are shown as vertical bars from the x axis. The NMFS survey population estimate for each year is shown as a diamond, and the vertical thin bars show the survey 95% confidence intervals.

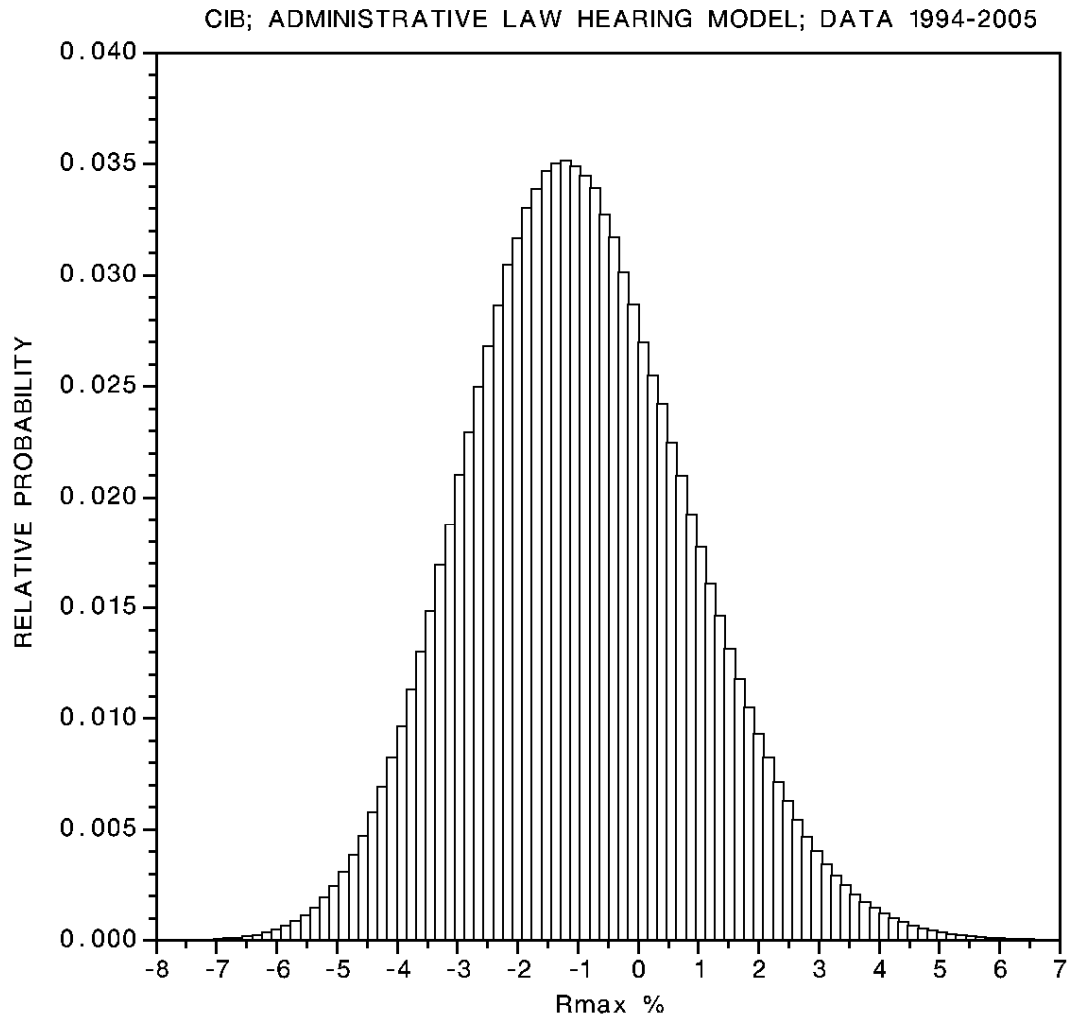


Figure 4. Bayesian inference on the underlying population growth rate of Cook Inlet belugas from fitting a density dependent growth model to the 1994–2005 population and harvest data.

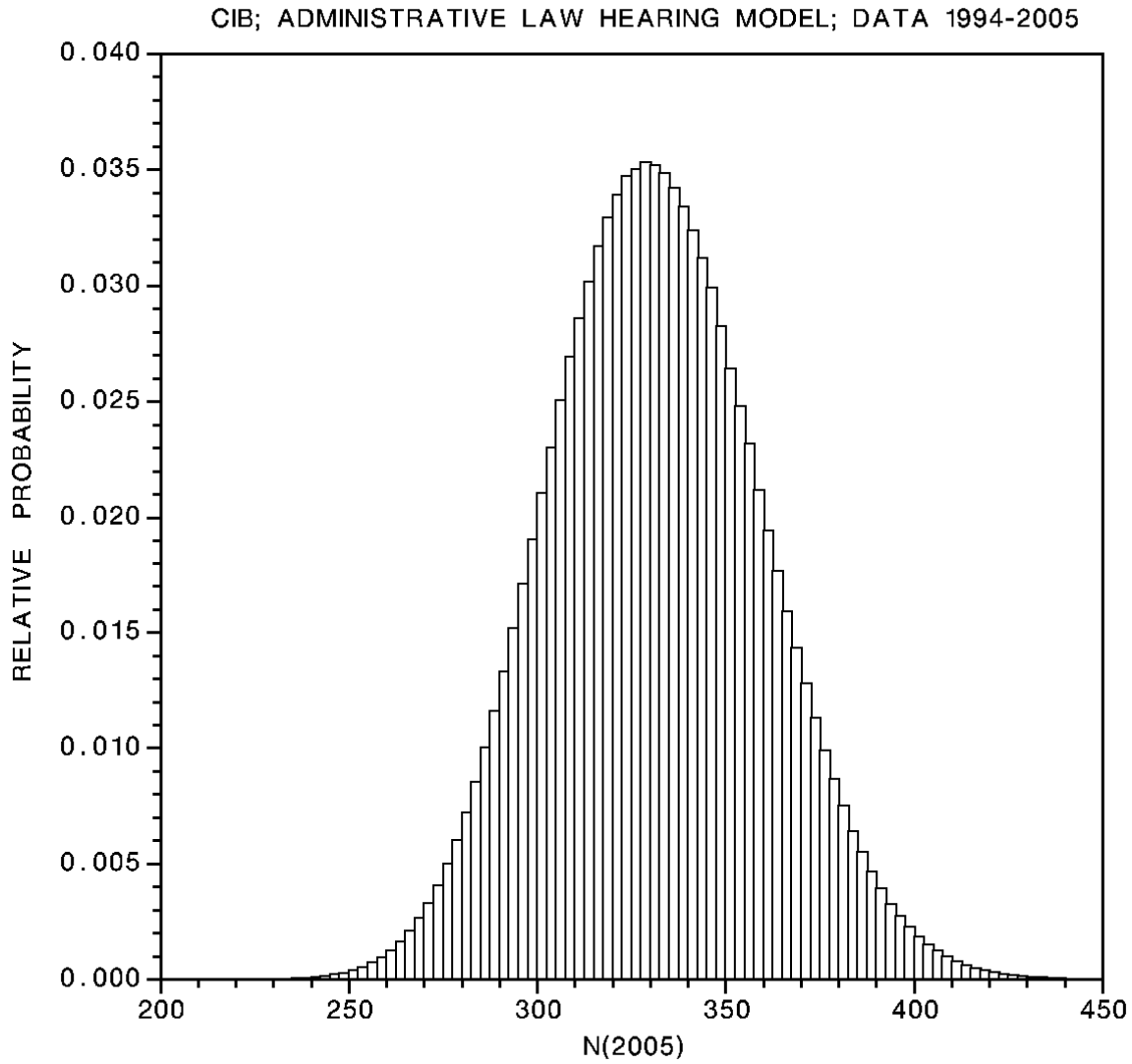


Figure 5. Bayesian inference on the 2005 population size of Cook Inlet belugas from fitting a density dependent growth model to the 1994–2005 population and harvest data.