

Porbeagle (*Lamna nasus*)

Table 1: Life history parameters for *Lamna nasus* (Campana *et al.* 1999, Compagno 2001, DFO 2001a, Francis and Duffy 2005, Francis *et al.* in press, Gauld 1989, Natanson *et al.* 2002, Stevens in press: In Fowler *et al.* in press).

Age at maturity (years)	female:	13 years at 50% maturity
	male:	8 years at 50% maturity
Size at maturity (total length cm)	female:	195 cm (South Pacific), 245 cm (North Atlantic)
	male:	165 cm (South Pacific), 195 cm (North Atlantic)
Longevity (years)	>26 or 25–46 years	
Maximum size (total length cm)	≥355 cm	
Size at birth (cm)	65–80cm	
Average reproductive age (years)*	18 years	
Gestation time (months)	8–9 months	
Reproductive periodicity	Annual	
Average annual fecundity or litter size	1–5 pups (average 4)	
Annual rate of population increase	0.05–0.07	
Natural mortality	0.10 (immatures), 0.15 (mature males), 0.20 (mature females)	

* This is the generation period required when using the IUCN decline criterion.

Table 2: Bycatch of Porbeagle *Lamna nasus* in South African flagged pelagic longliners. Extrapolation only tacking effort in the four regions where Porbeagles were caught (See Fig 1.) It is therefore likely to be an under-estimate (source: BirdLife/WWF Responsible Fisheries Programme. Data courtesy of Marine and Coastal Management, South Africa).

		Year	2000	2001	2002	2003	Total/mean
Discarded	Unknown		0	2	6	1	9
	Alive	Hook left in				5	5
		Hook removed					0
	Dead	Fin retained	1				1
		Whole shark discarded					0
Total discarded			1	2	6	6	15
Total retained			0	2	38	12	52
Total			1	4	44	18	67
No. Sharks caught per 1,000 hooks			0.01	0.01	0.16	0.10	0.07
Total no. caught in fishery relevant area*			11	17	194	55	276

Table 3: Seasonal trend in bycatch of Porbeagle sharks, corrected for effort.

Summer	0.00%
Autumn	4.10%
Winter	4.29%
Spring	91.60%
Total	100.00%

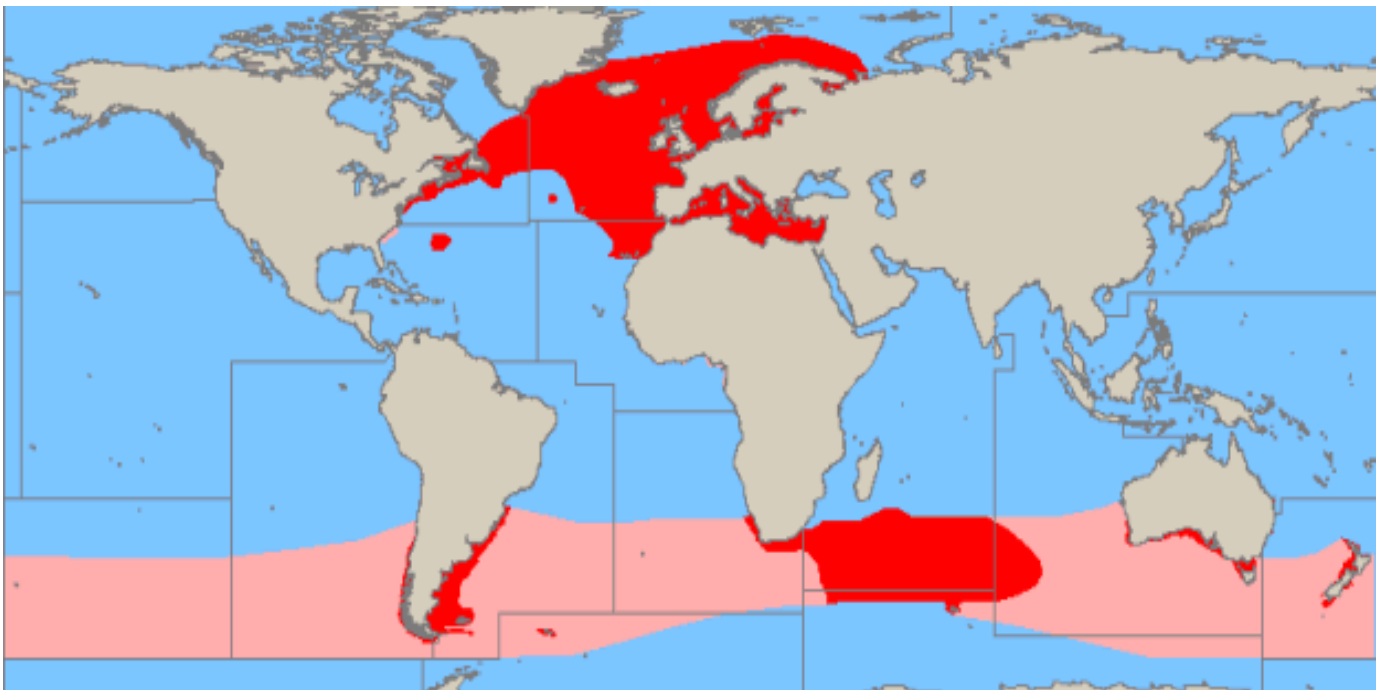


Figure 1: Distribution map for *Lamna nasus* (from FAO Species Identification Sheet 2003). Red/Dark: certain; Pink/Light: uncertain).

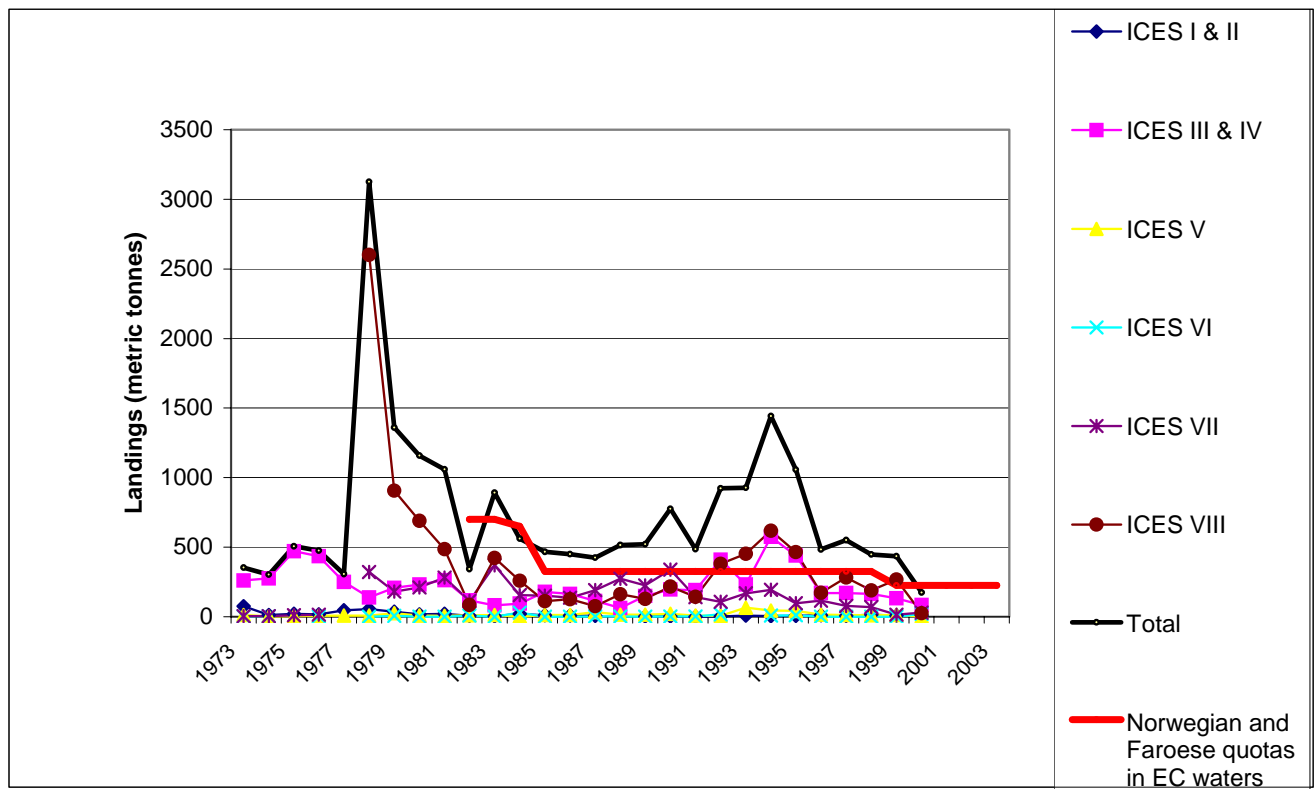


Figure 2: Landings of Porbeagle *Lamna nasus* from ICES shelf areas.

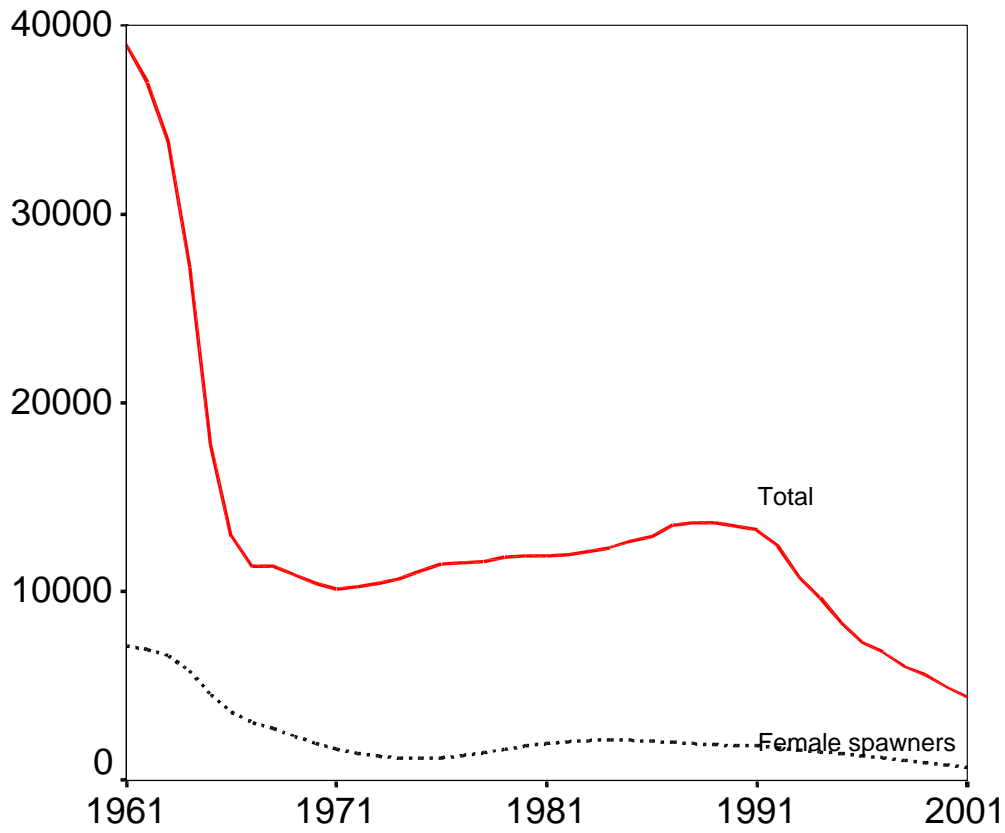


Figure 3: Biomass (t) of the Canadian Porbeagle stock, 1961–2000 (*source:* population model in DFO 2001).

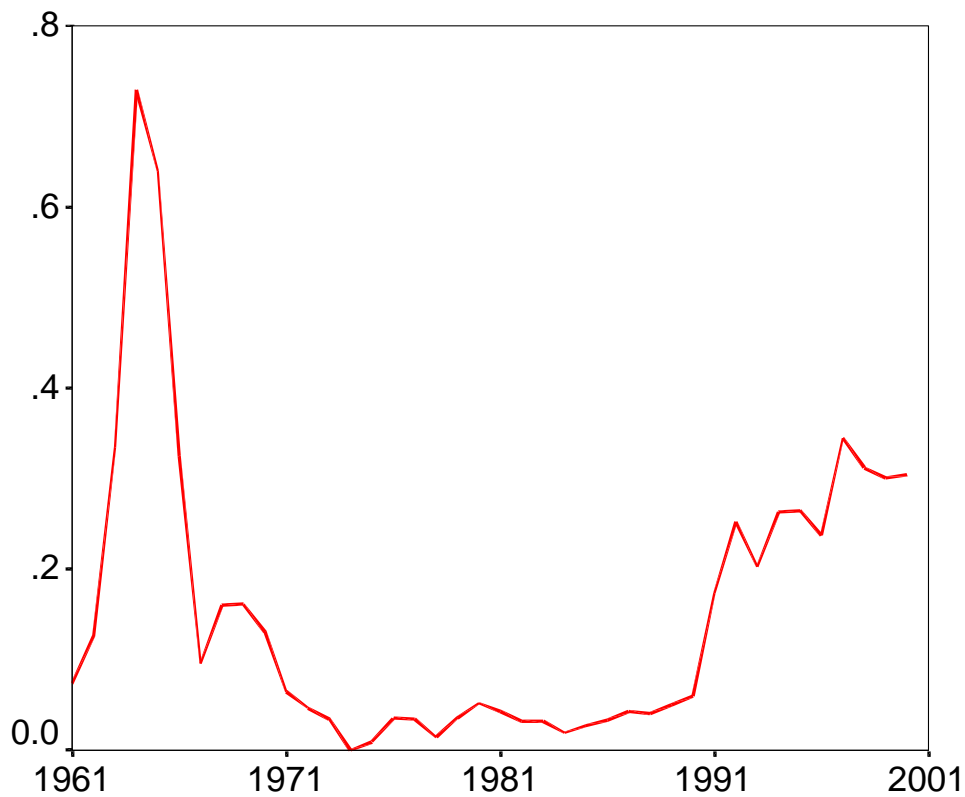


Figure 4: Fishing mortality on Canadian Porbeagle stock, 1961–2000 (*source:* population model in DFO 2001).

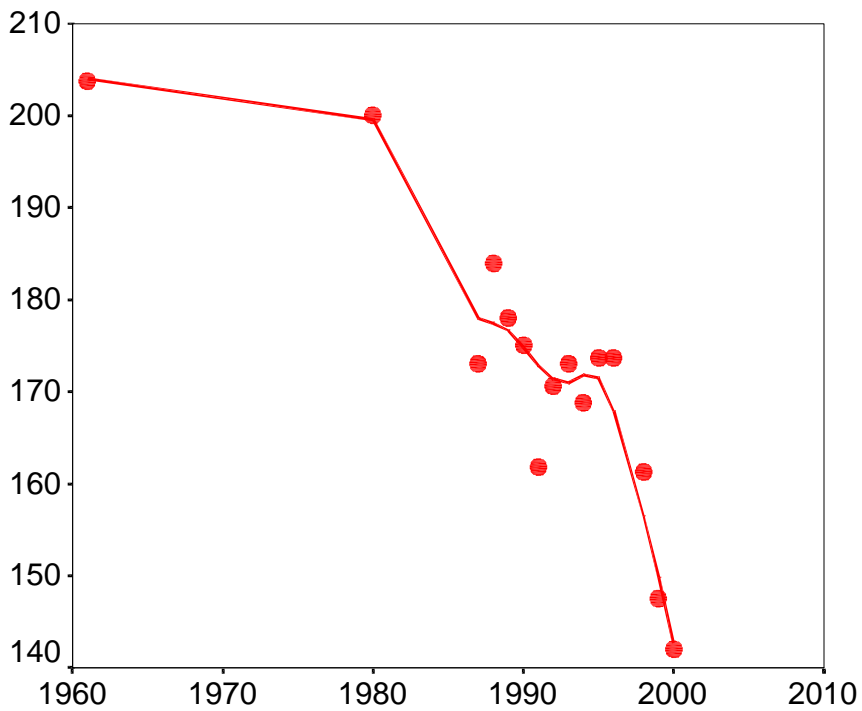


Figure 5: Median fork lengths (cm) of Porbeagles in the Canadian Porbeagle fishery from 1961 to 2000 (*source:* DFO 2001).

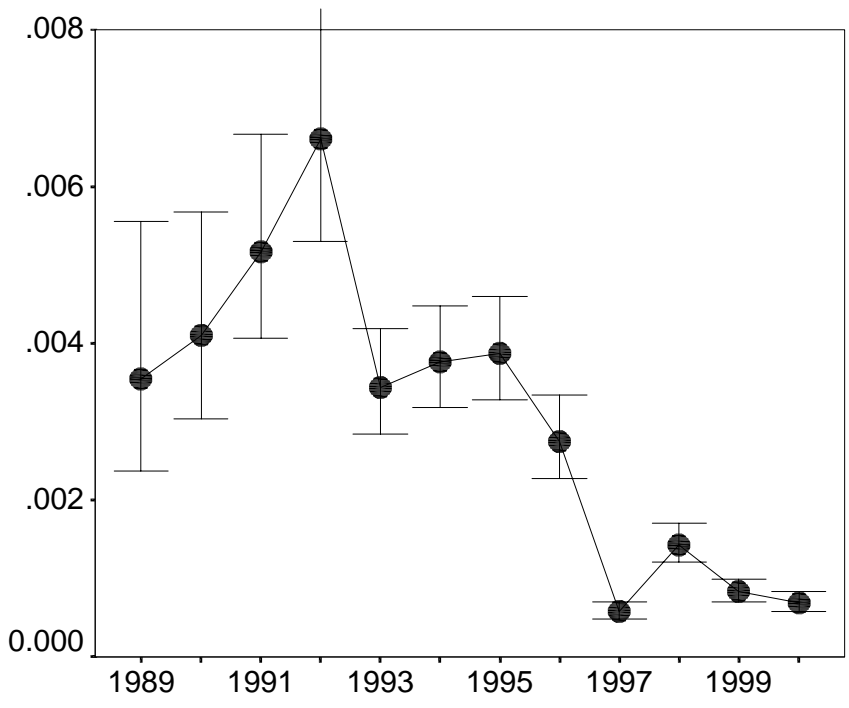


Figure 6: Catch rates (standardised numbers of mature sharks per hook) in the Canadian Porbeagle fishery, 1989–2000 (source: population model in DFO 2001).

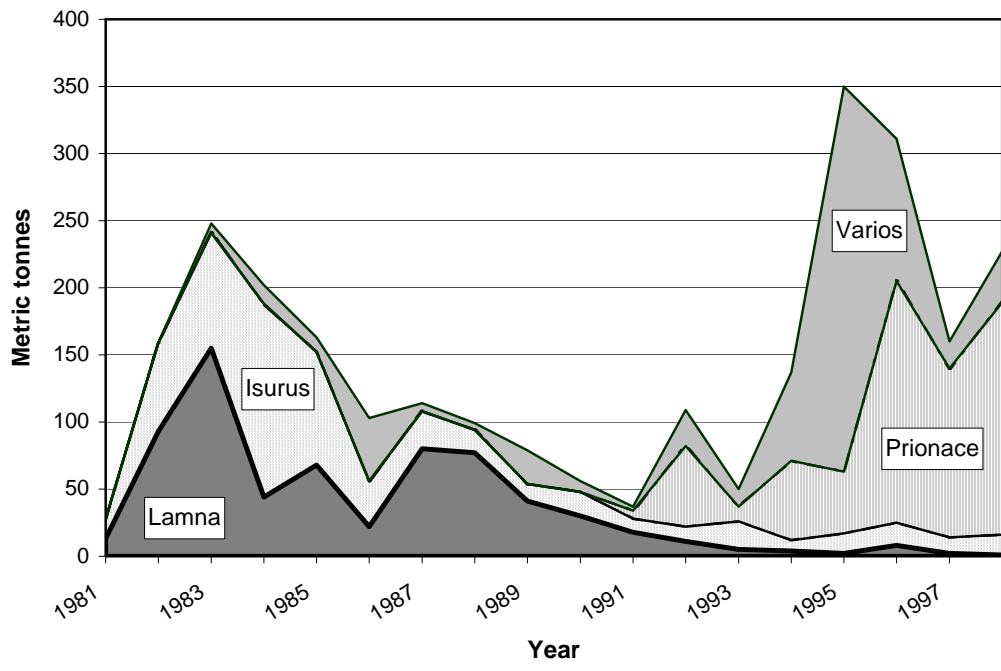


Figure 7: Sharks landed by the Uruguayan longline fleet, 1981–1998 (source: Domingo 2000). “Lamna” is *Lamna nasus*, Porbeagle shark; “Varios” includes eight species of large sharks.